



ESSENTIAL
FLOOR
PRODUCTS

Essential Floor Products Installation Instructions

Brief Introduction

Razor Luxury Vinyl Flooring—Your first choice! A “click” installation

Luxury vinyl flooring represents the newest generation of high-quality resilient wood. It has a unique interlocking-edge design for simple installation.

Simply follow the steps in the following section and you will see how easy it is to click the flooring together. Minimal trimming is involved, just score and snap the plank. The wear layer has additives embedded within the finish that makes this floor more durable and resistant to wear or scratches. It can be used in any area of the home and it carries a lifetime residential warranty and a product-specific commercial warranty against wear damage, indentions, moisture, stains, light scuffs and manufacturing defects.

Follow the instructions for installation in the next section and you will be enjoying your beautiful new floor in just a few hours.

Tools needed

- Utility knife & straight edge
- Measuring tape
- Shears for cutting around irregular shaped objects
- 1/8” spacers
- Planks needed to complete your project

Measure the length & width of your room. If the room has alcoves or offsets, measure these separately. This will give you the square footage of the room. Purchase a minimum of 5 to 10% extra to cover mistakes, trimming and for future needs and or replacement. Most installations require about 5% overage. However, this can vary depending upon the room size and layout.

Helpful Notice 1: For best results, it is important to purchase product (cases) from the same RUN # (dye lot). Different run #'s can have shade variations. Every case of vinyl has the run # printed on the ends of the case. Run # example: 28.03.2010. If you do have more than one run # we highly recommend you install planks from 4 or 5 different cases from different run #'s at one time and randomly mix them into the installation as you go. This will insure a more natural looking floor.

 +1 608 316 1569

 info@essflooring.com

 www.essflooring.com

CAUTION

Do not install Luxury Vinyl Flooring over carpet or any foam or underlayment that is not made specifically for floating luxury vinyl flooring. This product is not suitable for any outside use, sunrooms/solariums, saunas, or rooms that have the potential of flooding. We also highly recommend you do not install in rooms or homes that are not temperature controlled. Exposure to long term direct sunlight can cause damage to your floor. Do not install cabinetry or large kitchen islands on top of flooring. Environmental conditions must be maintained as specified, with a temperature of 65-85F (18-29C) at all times. If installed over radiant heating systems, the surface temperature of the subfloor must not exceed 85F (29C).

CHECK THE PLANKS BEFORE INSTALLING THEM TO BE SURE OF APPEARANCE.

We maintain strict quality control at the factory but it is a good idea to check each plank for blemishes or flaws. Return any such planks to your dealer for replacement.

Condition Luxury Vinyl Flooring prior to installation

You must place vinyl horizontally in the room of installation for 48 hours prior to installation.

Be sure the room temperature is between 65 & 85 F. Maintain this temperature during installation as well. Please open the cases by removing the tops of each case during the acclimation period.

Helpful Notice 2: *When installing Luxury Vinyl Flooring be sure to keep dust, dirt or foreign particles away from the Locking Strip. The cleaner the Locking Strip remains, the better the bond between planks. The vinyl planks are best kept in the box until you are ready to install them.*

Subfloor preparation:

The sub floor surface must be smooth, flat, dry, clean and solid. Carpet staples or adhesive residue must be removed to insure proper installation. Subfloors should be flat within a tolerance of 1/8" (3mm) over a span of 4 feet. Any unevenness over 1/8" (3mm) must be sanded down or filled with a floor leveler. Voids or humps in the sub floor will prevent vinyl from locking properly. Subfloors must be carefully checked for moisture problems. Luxury Vinyl Flooring is waterproof. It is NOT a water-proofer. Any moisture problems need to be addressed prior to installation. New concrete floors need to cure for a minimum of 60 days. Helpful Notice 3: If laying Luxury Vinyl Flooring over existing ceramic tile, it will be necessary to skim coat the grout lines with a floor leveler. If you install vinyl over an existing floor that has an embossing or grout line on it, you must skim coat with a floor leveler if the embossing or grout line is greater than 1/8" —(3 mm).

If you have old, ugly vinyl and don't want to pay for an expensive removal and remediating job, Luxury Vinyl Flooring is the perfect answer. Any loose or damaged tiles should be patched prior to installing vinyl over the old floor. Never sand old vinyl floors from any floor manufacturer, if you think the floor may be over 20 years old.

Installing Luxury Vinyl Flooring:

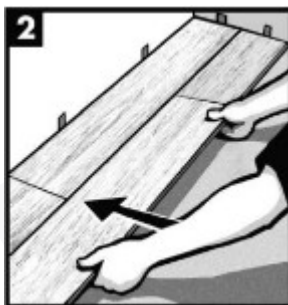
1. Installation should begin with a corner (left hand) and proceed from the wall with the tongue facing in towards the wall (Figure 1). Allow a minimum gap of 1/8" (2-3mm) for subfloor movement or product expansion.



2. When laying the first row in a straight line interlock the short ends by inserting the tongue into the grooves at an angle of about 15 to 20 degrees. Install each sequential plank on the short end (5.75") and be sure to line up evenly. It is of great significance for a wonderful installation.

3. Make sure to keep the seams between planks tight. You will feel and hear the click when locking the planks together to create a tight seam. There should be no gap visible between planks.

If your seam appears not to be tight, you should immediately pull apart the planks and Reassemble it. Slowly lift the top plank away from the bottom plank and simply reinsert it — repeating Step #2.

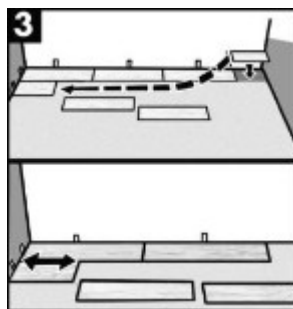


4. When installing Luxury Vinyl Flooring, it is strongly suggested to stagger the rows so that the short edge seams are not in a straight uniform line. We advise staggering rows (Figure 2).

5. To start the second row with the plank in proportion, measure and mark the plank, then using a straight edge and utility knife, score the plank and snap.

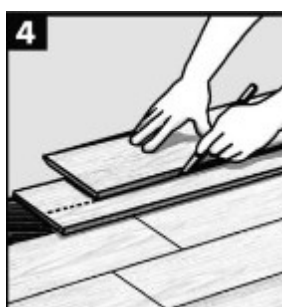
6. Interlock the plank tightly against the first row (long side) again at a 15-20 degree angle. The next plank, interlock the short side first, leaving it slightly away from the long side and then slide into the long side.

IMPORTANT NOTE: When cutting Luxury Vinyl Flooring for length, be sure to always cut the short side of the plank with the groove edge. The remaining piece can then be used on the opposite side of the room, at the end of that row (Figure 3) if the layout permits.



7. Start the third row with the plank cut to appropriate length. Again the remaining piece can be used at the opposite end of the row, if the layout of the room permits.

8. Continue this pattern for the remainder of the rows to be installed. Always place the cut end of the first plank against the wall (Figure 4).



9. Fitting around irregular objects is no problem. Simply make a pattern out of heavy paper to fit around pipes or irregular objects. Place the pattern upon the plank and trace. Cut along trace lines using a utility knife or heavy duty scissors and lay the plank. Be sure to leave a minimum of 1/8" expansion space around all fixed objects, floor vents and door frames.

The beauty of Luxury Vinyl Flooring is the ease of installing on both sides of the plank. This allows you to start in one room and continue through a doorway into another room with the same pattern and continue installing the floor forwards or backwards.

Helpful Notice 4: Be sure to keep some extra Luxury Vinyl Flooring in case there is an unforeseen need for replacement.

Check with your dealer to furnish moldings.

SPECIAL NOTICE: Inspect the ground before installation; the installation is feasible with the moisture under 40%. If the moisture level is over 40%, do not install the vinyl product. Your warranty will be null and void. A way to test the moisture is to flatly place a couple of tiles on the ground and see if there is moisture on the back 6-12 hours later.

Also noted: The following situations are beyond the warranty: Please be advised there could be minor color, shade or texture variations between samples, printed color photography and the actual material.

CARE & MAINTENANCE GUIDE

You have just installed Luxury Vinyl Strip. Your new resilient floor was produced under the highest quality standards and will provide you with a lifetime of enjoyment. Although Luxury Vinyl Flooring is one of the easiest floors to maintain, please follow the recommendations in this guide to retain the fresh look and protect the factory finish.

After installing the floor, we recommend a first cleaning to remove any loose dirt or debris that may have been introduced during the installation process.

Please check any new cleaning agents on a small test patch of the floor in an inconspicuous area, and avoid using harsh cleaners or alcohol or ammonia-based cleaning products.

1. First sweep and vacuum the floor surface to ensure removal of all loose dust, dirt, and debris. Using a mop (or, for large areas, a floor cleaning machine with a low-abrasive pad), scrub the flooring surface. Using warm, clean water, rinse several times or as needed, then use a dry mop or wet-vacuum to remove the water and allow drying.
2. Do not allow pets with unclipped nails to damage your Razor Luxury Vinyl Flooring. It may result in severe scratching to the surface. Replace furniture glides and round-headed hard plastic glides with floor protectors made of non-staining felt on furniture legs. The same is true for any high heeled shoes that do not have proper tips on the heels which is not covered by the warranty.
3. Avoid exposure to direct sunlight for prolonged periods of time. During peak sunlight hours, use drapes or blinds to minimize the direct sunlight on the Luxury Vinyl Flooring. Most types of vinyl flooring will be affected by continuous strong sunlight. To avoid an uneven appearance, please consider relocations of any area rugs from time to time. In addition, excessive temperatures are not good for resilient floors. Some natural ventilation or intermittent air conditioning in vacant homes should be considered. Long term continuous inside temperatures over 95 F degrees combined with strong direct sunlight will damage your Luxury Vinyl Flooring and cause the installation to fail.
4. Always sweep or vacuum your Luxury Vinyl Flooring before cleaning so that all loose dirt and particles are removed. Some hand wiping may be required to remove tough spots and spills. . For best results do not use combination cleaner/finish products.
5. DO NOT WAX YOUR Luxury Vinyl Flooring! The surface of your floor is very dense and nonporous, which prevents wax from penetrating and thus builds up a bed for yellowing

and dirt collection. The same non-porous feature also provides all the protection against wear and staining that you will need.

6. If your floor has been exposed to excessive amounts of water due to flooding, do not panic. Luxury Vinyl Flooring is waterproof! Simply remove the water as quickly as possible. A dehumidifier should be promptly turned on in the room to reduce the moisture levels back to normal. Do not dry the room below the normal moisture level that existed previously.